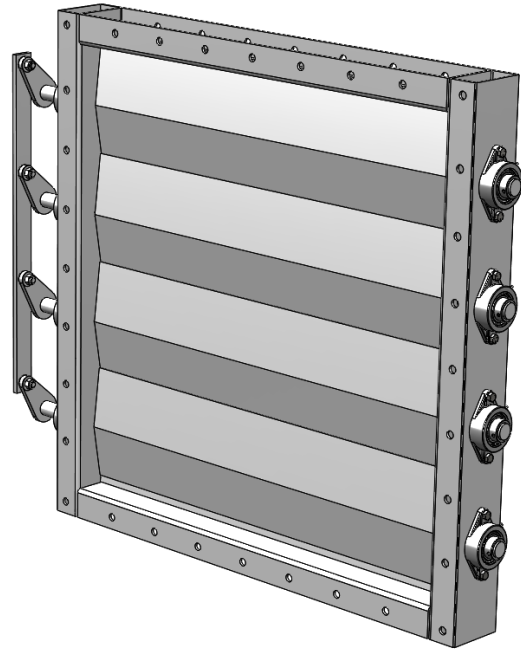


Standard Industrial Rectangular Multi Blade Damper

VentilationComponents.com's rectangular multi blade dampers are durable and cost effective.



Application

- Use for tight shut off or balancing of an air stream
- Various sizes available, built to suit rectangular ducts and equipment
- Differential pressure ratings ranging from 15inWC to 50inWC available, with higher pressure ratings up to 100inWC available upon request

Features

- Flanged inlet and outlet connections
- Tight sealing positive stop blades
- Can be fitted with manual locking quadrant gear box with chain wheel, positioned rotary actuator, or cylinder lever actuator
- Available in a variety of materials

Benefits

- Simple, reliable, and easy to maintain
- Heavy duty construction

Options

Size

Sizes ranging from 36.00in x 36.00in to 120.00in x 120.00in inside flange are available. Larger sizes are available upon request.

Pressure rating

Three different pressure ratings are offered: up to 15inWC, up to 30inWC, and up to 50inWC. Custom pressure ratings up to 100inWC are available upon request.

Flange bolt pattern

The flange bolt patterns follow our standard. Different patterns are available upon request.

Actuator linkage

Linkage considerations for an actuator, and corresponding custom actuator mounting pieces, are built to suit.

Actuator supply

An actuator and accessories can be supplied upon request.

Materials

A variety of materials are offered to suit different applications.

Primary material

- 304 stainless steel
- 316 stainless steel
- Corten steel
- Carbon steel painted, moderate exposure

Bearing type

- Regular
- High temperature

Blade seal material

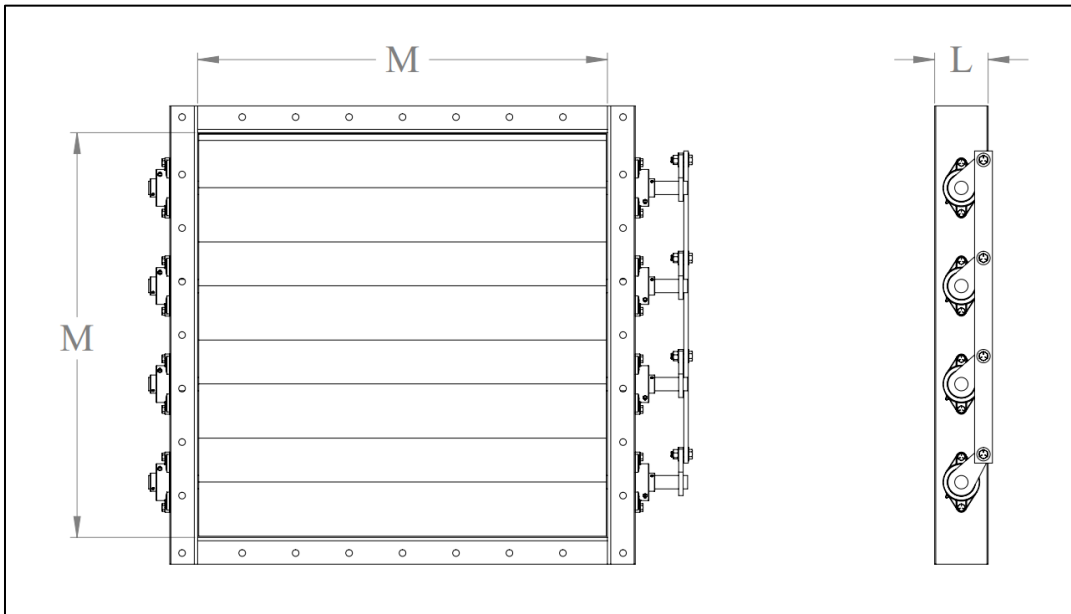
- High strength rubber hose

Hardware material

- 304 stainless steel
- 316 stainless steel
- Type 18-8 stainless steel
- Zinc chromate grade 5
- Carbon steel grade 5

Other materials not listed are available upon request.

Data and dimensions



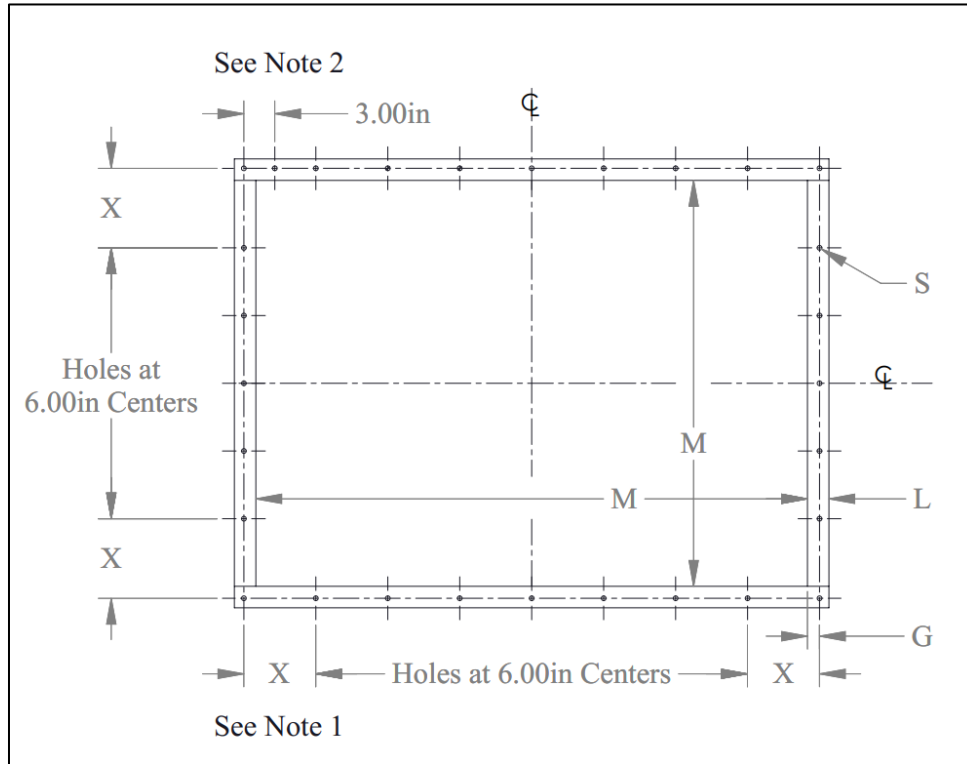
Item Number	"M" Largest Dimension Width or Height		Nominal Pressure Rating	"L" Length	Actuator Minimum Torque Required
	M _{LOWER}	M _{UPPER}			
	inches	inches	inWC	inches	ft·lb _f
DA-09-[36.00 to 39.00]-15	36.00	39.00	15	6.50	556
DA-09-[36.00 to 39.00]-30	36.00	39.00	30	6.50	1048
DA-09-[36.00 to 39.00]-50	36.00	39.00	50	6.50	1814
DA-09-[39.01 to 46.00]-15	39.01	46.00	15	7.00	836
DA-09-[39.01 to 46.00]-30	39.01	46.00	30	7.00	1422
DA-09-[39.01 to 46.00]-50	39.01	46.00	50	7.00	2336
DA-09-[46.01 to 54.00]-15	46.01	54.00	15	7.50	1113
DA-09-[46.01 to 54.00]-30	46.01	54.00	30	7.50	1700
DA-09-[46.01 to 54.00]-50	46.01	54.00	50	7.50	2757
DA-09-[54.01 to 62.00]-15	54.01	62.00	15	8.25	1308
DA-09-[54.01 to 62.00]-30	54.01	62.00	30	8.25	2285
DA-09-[54.01 to 62.00]-50	54.01	62.00	50	8.25	3106
DA-09-[62.01 to 70.00]-15	62.01	70.00	15	8.75	1565
DA-09-[62.01 to 70.00]-30	62.01	70.00	30	8.75	2595
DA-09-[62.01 to 70.00]-50	62.01	70.00	50	8.75	2853
DA-09-[70.01 to 78.00]-15	70.01	78.00	15	9.25	1936
DA-09-[70.01 to 78.00]-30	70.01	78.00	30	9.25	2870
DA-09-[70.01 to 78.00]-50	70.01	78.00	50	9.25	3335

Item Number	"M" Largest Dimension Width or Height		Nominal Pressure Rating	"L" Length	Actuator Minimum Torque Required
	M _{LOWER}	M _{UPPER}			
	inches	inches	inWC	inches	ft·lb _f
DA-09-[78.01 to 86.00]-15	78.01	86.00	15	10.00	2321
DA-09-[78.01 to 86.00]-30	78.01	86.00	30	10.00	3259
DA-09-[78.01 to 86.00]-50	78.01	86.00	50	10.00	3817
DA-09-[86.01 to 94.00]-15	86.01	94.00	15	10.25	2587
DA-09-[86.01 to 94.00]-30	86.01	94.00	30	10.25	3650
DA-09-[86.01 to 94.00]-50	86.01	94.00	50	10.25	4486
DA-09-[94.01 to 101.00]-15	94.01	101.00	15	11.00	2794
DA-09-[94.01 to 101.00]-30	94.01	101.00	30	11.00	4031
DA-09-[94.01 to 101.00]-50	94.01	101.00	50	11.00	4780
DA-09-[101.01 to 108.00]-15	101.01	108.00	15	12.00	3218
DA-09-[101.01 to 108.00]-30	101.01	108.00	30	12.00	4667
DA-09-[101.01 to 108.00]-50	101.01	108.00	50	12.00	5262
DA-09-[108.01 to 120.00]-15	108.01	120.00	15	13.00	3644
DA-09-[108.01 to 120.00]-30	108.01	120.00	30	13.00	5035
DA-09-[108.01 to 120.00]-50	108.01	120.00	50	13.00	5744

Notes

1. Nominal Size to be specified by customer.
2. 3D model files and general arrangement drawings with installation details available upon order.

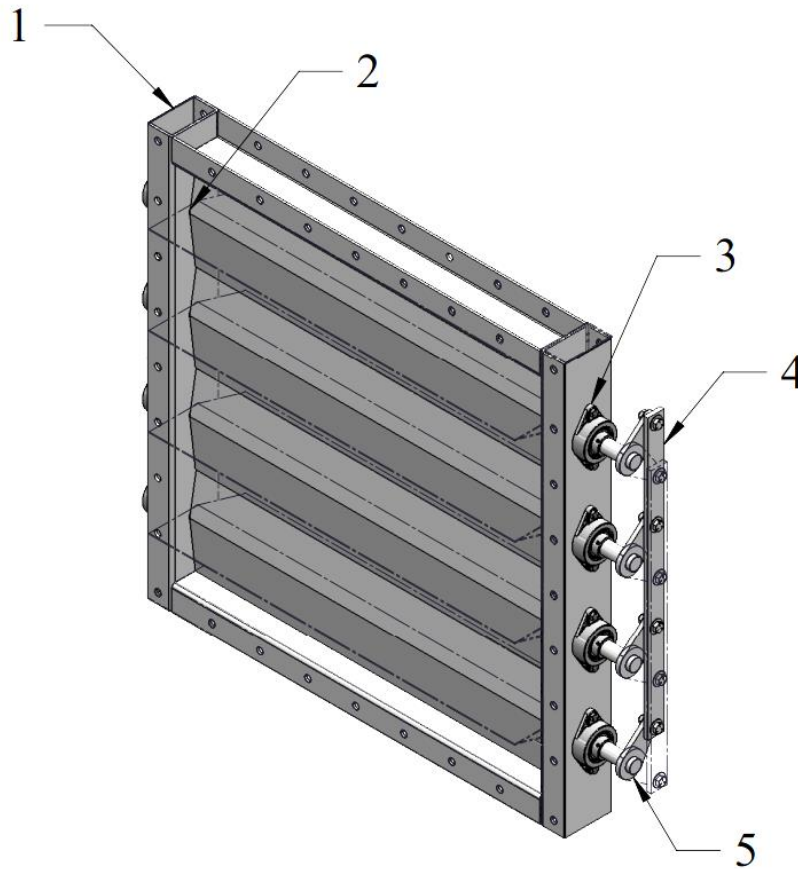
Standard rectangular flange details



"M" Largest Dimension Width or Height		"L" Flange Leg	"G" Gauge	"S" Hole Diameter	Bolt Size
M _{LOWER}	M _{UPPER}				
inches	inches	inches	inches	inches	inches
0	31.00	1.50	0.875	0.500	3/8
31.01	39.00	2.00	1.125	0.500	3/8
39.01	78.00	2.50	1.375	0.625	1/2
78.01	101.00	3.00	1.750	0.625	1/2
101.01	120.00	4.00	2.250	0.625	1/2

Notes

1. "X" is minimum 2.50in and maximum 8.50in.
2. If "X" is greater than 6.00in, add an extra hole 3.00in from corner hole.
3. Holes always land on centerlines and corners.



Parts list

Number	Quantity	Description
1	1	Main weldment
1	Varies	Blade seal
3	Varies	Bearing
4	1	Linkage, built to suit
5	Varies	Blade weldment

Notes

1. All hardware provided, unit is assembled when delivered.

How to order

To fully specify the DA-09 Rectangular Multi Blade Damper, make a selection from the code boxes below.

Example: DA-09-C-2-H-R-3-30-S-C-C, shown below, is a rectangular multi blade damper with 316 stainless steel as the primary material, high strength rubber hose blade seals, regular bearings, type 18-8 stainless steel hardware, a 30inWC pressure rating, and our standard bolt pattern. The customer has specified that the damper be 64.00in height and 40.00in width and has provided instructions for the linkage and actuator mount requirements.

1	2	3	4	5	6	7	8	9	10	11
DA	09	C	2	H	R	3	30	S	C	C
Specifications										
Please provide a drawing for our approval of a 64.00in height and 40.00in width rectangular multiblade damper, as specified, with linkage and a mount that matches the cylinder actuator in the attached document.										

1	Equipment type			
DA	Damper			
2	Equipment sub-type			
09	Rectangular Multi Blade Damper			
3	Nominal size			
C	Customer Specified Size			
4	Primary material			
1	304 Stainless Steel	4	Painted Carbon Steel, Moderate Exposure	
2	316 Stainless Steel	C	Customer Specified Material	
3	Corten Steel			
5	Blade seal material			
H	High Strength Rubber Hose	C	Customer Specified Material	
6	Bearing type			
R	Regular	C	Customer Specified Type	
H	High Temperature			
7	Hardware material			
1	304 Stainless Steel	4	Zinc Chromate Grade 5	
2	316 Stainless Steel	5	Carbon Steel Grade 5	
3	Type 18-8 Stainless Steel	C	Customer Specified Material	
8	Pressure rating			
15	15inWC, Up to 4500fpm	50	50inWC, Up to 6000fpm	
30	30inWC, Up to 5000fpm	C	Customer Specified Pressure Rating	
9	Flange bolt pattern			
S	Standard	C	Customer Specified Flange Bolt Pattern	
10	Actuator and accessories supply			
C	Customer	V	VentilationComponents.com	
11	Linkage and actuator mount details			
C	Customer Supplied Details	V	VentilationComponents.com Supplied Details	

Many types of customizations are available upon request.

Note: There are various factors which should be considered when selecting a damper for a specific application. Some of these factors are outside of the scope of this data sheet. If you have any questions regarding the application, compatibility, or use of this damper, contact VentilationComponents.com for more information.

Contact@VentilationComponents.com