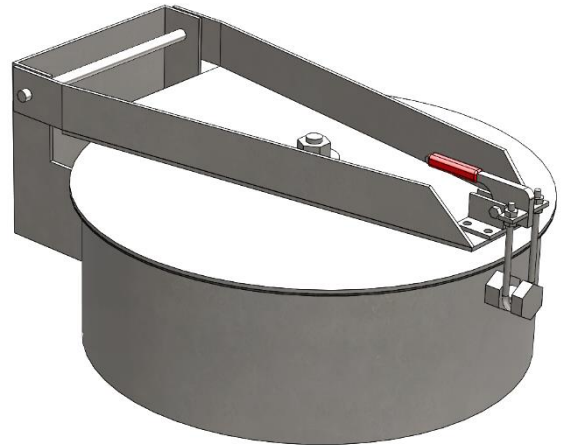


# Standard Industrial Round Inspection Port



VentilationComponents.com's round inspection ports are durable and cost effective.

## Application

- Suitable for mounting on ducting or equipment for various wet ventilation systems
- Various sizes available, built to suit flat or round ducts and vessels
- Pressure ratings ranging from 15inWC to 50inWC, with higher pressure ratings up to 100inWC available upon request

## Features

- Welded to duct or vessel
- Heavy duty toggle clamp and gasket
- Available in a variety of materials

## Benefits

- The gasket is loaded evenly on the perimeter of the door to achieve a water tight seal
- Simple, reliable, and easy to maintain
- Heavy duty construction

## Options

### Size

Standard nominal sizes of 10.00in, 14.00in, 18.00in, and 22.00in are available and are built to suit flat or round duct and vessels. Larger sizes and custom sizes are available upon request.

### Pressure rating

Three different pressure ratings are offered: 15inWC, 30inWC, and 50inWC. Custom pressure ratings up to 100inWC are available upon request.

### Materials

A variety of materials are offered to suit different applications.

#### Primary material

- 304 stainless steel
- 316 stainless steel
- Corten steel
- Carbon steel painted, moderate exposure

#### Gasket material

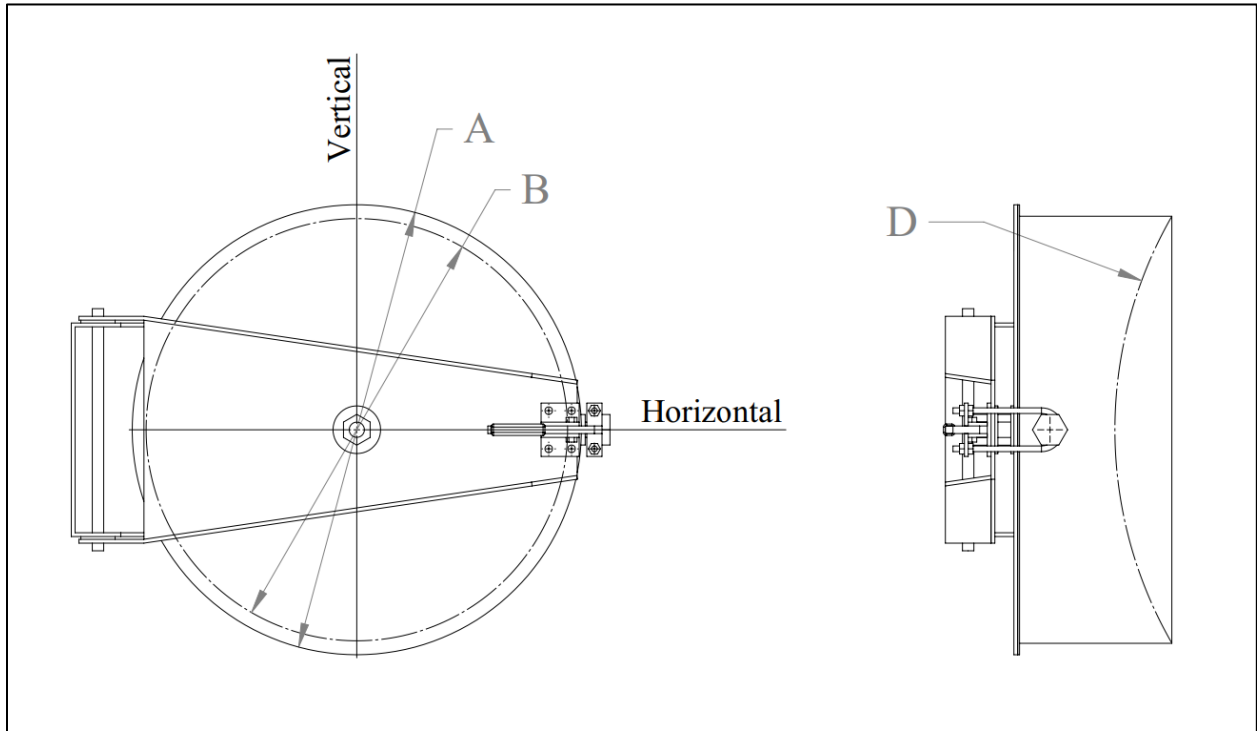
- EPDM
- Silicone

#### Hardware material

- 304 stainless steel
- 316 stainless steel
- Type 18-8 stainless steel
- Zinc chromate grade 5
- Carbon steel grade 5

Other materials not listed are available upon request.

### Data and dimensions

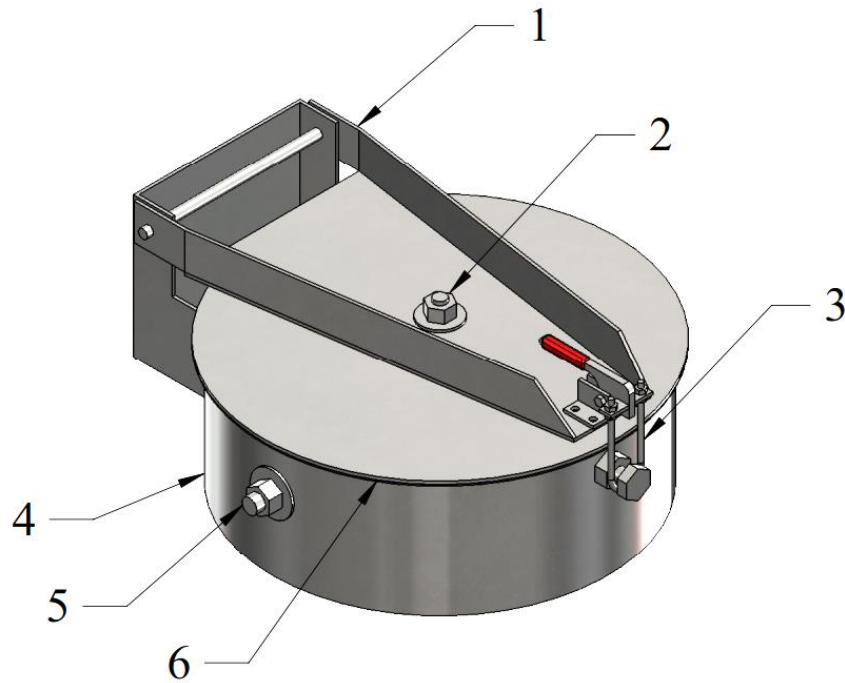


Item Number	"D"	"A"	"B"	Nominal Pressure Rating	Total Weight
	Horizontal or Vertical Duct or Vessel Size	Nominal Size	Duct or Vessel Opening Size (Flat)		
	inches	inches	inches	inWC	lb <sub>m</sub>
IP-02-10-F-15	0 (Flat)	10.00	9.75	15	10
IP-02-10-F-30	0 (Flat)	10.00	9.75	30	14
IP-02-10-F-50	0 (Flat)	10.00	9.50	50	20
IP-02-10-C-15	Customer Specified	10.00	9.75	15	10
IP-02-10-C-30	Customer Specified	10.00	9.75	30	14
IP-02-10-C-50	Customer Specified	10.00	9.50	50	20
IP-02-14-F-15	0 (Flat)	14.00	13.75	15	18
IP-02-14-F-30	0 (Flat)	14.00	13.75	30	23
IP-02-14-F-50	0 (Flat)	14.00	13.50	50	30
IP-02-14-C-15	Customer Specified	14.00	13.75	15	18
IP-02-14-C-30	Customer Specified	14.00	13.75	30	23
IP-02-14-C-50	Customer Specified	14.00	13.50	50	30

Item Number	"D" Horizontal or Vertical Duct or Vessel Size	"A" Nominal Size	"B" Duct or Vessel Opening Size (Flat)	Nominal Pressure Rating	Total Weight
	inches	inches	inches	inWC	lb <sub>m</sub>
IP-02-18-F-15	0 (Flat)	18.00	17.75	15	31
IP-02-18-F-30	0 (Flat)	18.00	17.75	30	35
IP-02-18-F-50	0 (Flat)	18.00	17.50	50	45
IP-02-18-C-15	Customer Specified	18.00	17.75	15	31
IP-02-18-C-30	Customer Specified	18.00	17.75	30	35
IP-02-18-C-50	Customer Specified	18.00	17.50	50	45
IP-02-22-F-15	0 (Flat)	22.00	21.75	15	60
IP-02-22-F-30	0 (Flat)	22.00	21.75	30	72
IP-02-22-F-50	0 (Flat)	22.00	21.50	50	98
IP-02-22-C-15	Customer Specified	22.00	21.75	15	60
IP-02-22-C-30	Customer Specified	22.00	21.75	30	72
IP-02-22-C-50	Customer Specified	22.00	21.50	50	98

## Notes

1. 3D model files and general arrangement drawings with installation details available upon order.
2. Duct or vessel diameter size must be minimum 2.00in larger than nominal size of port.
3. Off center to duct or vessel mounting options available upon request.



### Parts list

Number	Quantity	Description
1	1	Main port door weldment
2	1	Center loading point
3	1	Toggle clamp
4	1	Main port weldment
5	1	Safety rod (see note 2)
6	1	Gasket

#### Notes

1. All hardware provided, unit is assembled when delivered.
2. Safety rod included on sizes 18in and 22in, and included on other sizes upon request.

## How to order

To fully specify the IP-02 Round Inspection Port, make a selection from the code boxes below.

**Example:** IP-02-14-CH-2-E-3-30, shown below, is a round inspection port of nominal 14.00in size with 316 stainless steel as the primary material, an EPDM gasket, type 18-8 stainless steel hardware, and a pressure rating of 30inWC. The customer has specified that the port be made to suit a 20.00in horizontal diameter duct.

<b>1</b>	<b>2</b>	<b>3</b>	<b>4</b>	<b>5</b>	<b>6</b>	<b>7</b>	<b>8</b>
IP	02	14	CH	2	E	3	30
<b>Specifications</b>							
Please provide a drawing for our approval of the specified port that suits a 20.00in horizontal duct.							

<b>1</b>	<b>Equipment type</b>						
<b>IP</b>	Inspection Port						
<b>2</b>	<b>Equipment sub-type</b>						
<b>02</b>	Round Inspection Port						
<b>3</b>	<b>Nominal size</b>						
<b>10</b>	Nominal 10.00in [254.0mm]			<b>22</b>	Nominal 22.00in [558.8mm]		
<b>14</b>	Nominal 14.00in [355.6mm]			<b>C</b>	Customer Specified Size		
<b>18</b>	Nominal 18.00in [457.2mm]						
<b>4</b>	<b>Duct or vessel size</b>						
<b>FL</b>	Flat			<b>CV</b>	Customer Specified Diameter Vertical		
<b>CH</b>	Customer Specified Diameter Horizontal			<b>CC</b>	Customer Specified Diameter and Angular Orientation		
<b>5</b>	<b>Primary material</b>						
<b>1</b>	304 Stainless Steel			<b>4</b>	Painted Carbon Steel, Moderate Exposure		
<b>2</b>	316 Stainless Steel			<b>C</b>	Customer Specified Material		
<b>3</b>	Corten Steel						
<b>6</b>	<b>Gasket material</b>						
<b>E</b>	EPDM			<b>C</b>	Customer Specified Material		
<b>S</b>	Silicone						
<b>7</b>	<b>Hardware material</b>						
<b>1</b>	304 Stainless Steel			<b>4</b>	Zinc Chromate Grade 5		
<b>2</b>	316 Stainless Steel			<b>5</b>	Carbon Steel Grade 5		
<b>3</b>	Type 18-8 Stainless Steel			<b>C</b>	Customer Specified Material		
<b>8</b>	<b>Pressure rating</b>						
<b>15</b>	15inWC, Up to 4500fpm			<b>50</b>	50inWC, Up to 6000fpm		
<b>30</b>	30inWC, Up to 5000fpm			<b>C</b>	Customer Specified Pressure Rating		

Many types of customizations are available upon request.

**Note:** There are various factors which should be considered when selecting an inspection port for a specific application. Some of these factors are outside of the scope of this data sheet. If you have any questions regarding the application, compatibility, or use of this inspection port, contact [VentilationComponents.com](http://VentilationComponents.com) for more information.





Contact@VentilationComponents.com